

The background is a solid light green color. It is filled with various black musical symbols scattered across the surface. These symbols include eighth notes, quarter notes, and sixteenth notes, some with stems pointing up and some pointing down. There are also dynamic markings such as 'p' (piano) and 'f' (forte), and a fermata symbol. The symbols are distributed randomly, creating a musical-themed pattern.

Green Belt Music

Exercises

Directions: Write in the missing counts below each rhythm pattern. Once complete, practice counting and clapping each line.

$\frac{4}{4}$ 

$\frac{4}{4}$ 

$\frac{4}{4}$ 

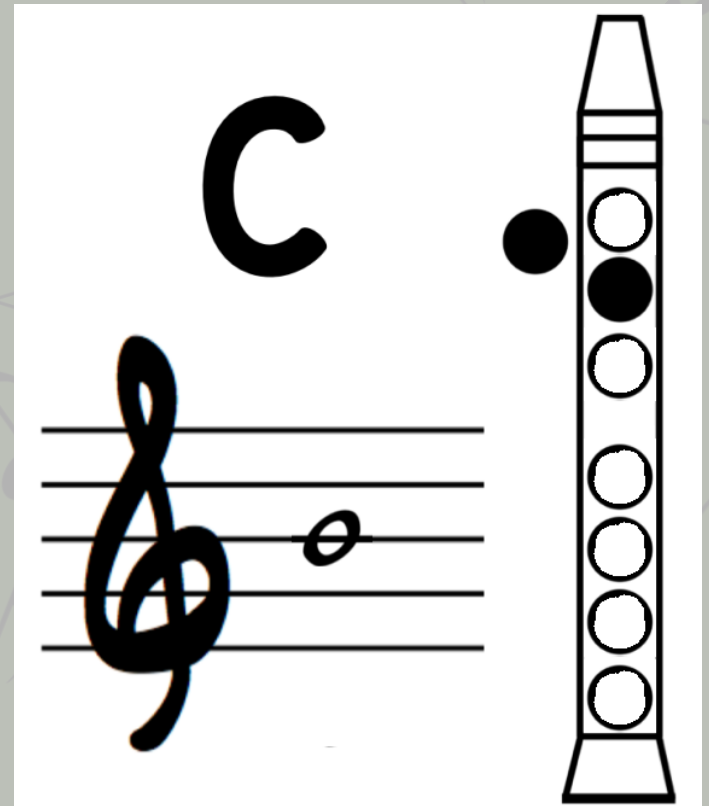
Directions: Solve each inequality below. Use the greater than sign $>$, the less than sign $<$, or equal sign $=$ to complete the problems.

How to Play 'C'

'C' is played by:

- placing your left thumb on the thumb hole
- Placing your left middle finger on the second tone hole.

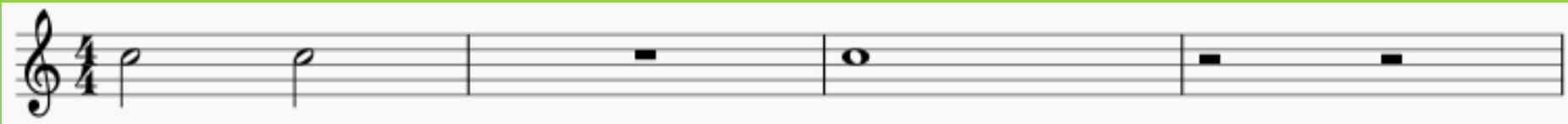


Exercises

Directions: Write in the letter names below each rhythm pattern. Once complete, practice the finger positions, sizzling, and playing each line.



Tips for playing: When practicing, cover all holes tightly- leaks cause squeaks! The left hand is always placed above the right hand. Remember to use warm gentle air!



Green Belt Song

